




# **HeatShield<sup>®</sup>**

## **Cerfractory<sup>®</sup> Flue Sealant**

### **Chimney Repair & Resurfacing System**

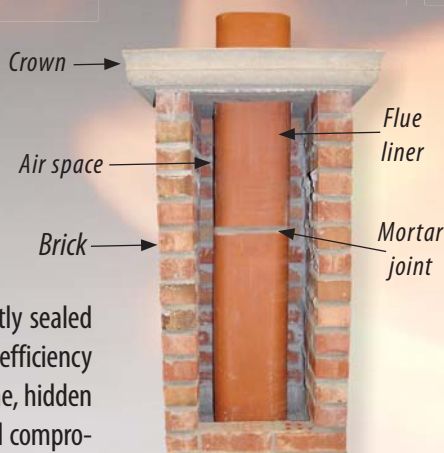
- Improves Chimney Performance
- Eliminates Hazards
- Economical
- Eco Friendly
- Listed UL 2425
- 20 Year Warranty



**“Restore your chimney with HeatShield<sup>®</sup>”**

# Anatomy Of Your Chimney

Whether your masonry chimney is used to vent a fireplace, woodstove or furnace, most have sections of clay flue tile stacked one on top the other to form a liner called the flue. The flue liner should be tightly sealed to protect the integrity and efficiency of your chimney. But over time, hidden dangers can develop that will compromise the safety and efficiency of your chimney.



## Are There Hidden Dangers In Your Chimney?

### Gaps Between Flue Tiles

The combustion process creates noxious gases that can contain creosote/soot, carbon monoxide and corrosive chemicals. The purpose of your chimney is to safely vent these hazardous flue gases from your home. Flue tiles are typically sealed with mortar to keep these gases within the flue. But over time, the mixture of heat, moisture and chemicals will erode the mortar, leaving gaps or voids between flue tiles.



Actual photo of deteriorated mortar joint between flue tiles

### Cracked Flue Tiles

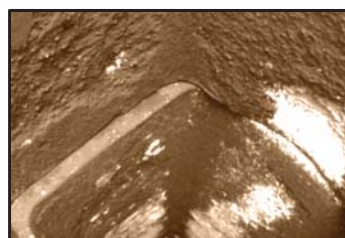
Flue tiles can crack due to "sudden occurrences" such as a previous chimney fire, lightning strike, or seismic event. Cracks may also be caused by poor workmanship or the ongoing settling of your home.



Actual photo of cracked flue tiles

### Flaking Flue Tiles (Spalling)

Years of exposure to corrosive chemicals and moisture from combustion can attack clay flue tiles, causing pieces of the flue liner to flake off or delaminate, a process called spalling.

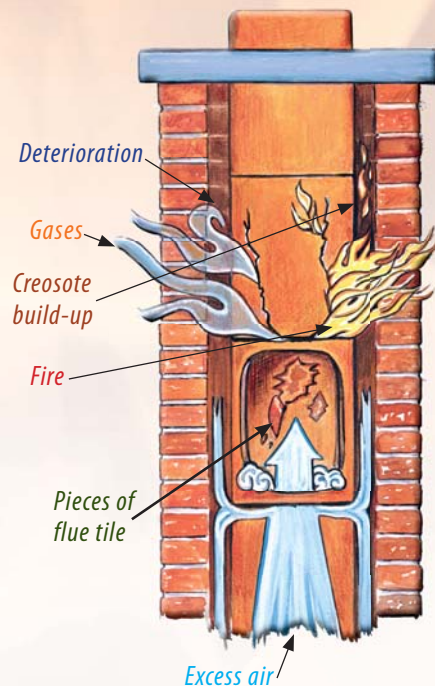


Actual photo of spalled flue tiles

# How These Hidden Dangers Can Affect You

## Fire & Health Risks

These defects, no matter how small, can begin a process that will further erode the chimney and can pose a threat to your family's health. When heat, moisture and gases escape through gaps and cracks in your chimney, they can **deteriorate** your chimney from the inside out. More importantly, the gaps and cracks can cause health risks, by allowing poisonous **gases** to escape into your home. Combustible **creosote** or **soot** can also escape through these openings and build up outside the flue liner. If the creosote were to catch **fire** in this area of your chimney, serious damage can occur, because the fire can no longer be contained within the flue. **Pieces of flue tile** that flake off due to spalling can form dangerous blockages within your chimney.



## Loss Of Efficiency

Chimneys, to work correctly and efficiently, must be gas tight and free of gaps and cracks. Gases rising up through your chimney are similar to liquid being sipped through a straw. If the straw has a crack or hole in it the liquid will not flow effectively through it. Gaps and cracks allow **excess air** into your chimney, slow the updraft and make it harder for smoke and gases to rise up and out. Hence, the fireplace, woodstove or furnace will perform poorly, resulting in the loss of heat efficiency.

### Chimney Safety Institute Of America (csia.org)

According to the CSIA (csia.org), problems such as gaps, cracks, and spalling in your chimney's flue can present serious risks to your home and family, because your chimney can no longer perform its intended function— to safely contain and vent the products of combustion to the outside.

### Building Codes

Building codes and fire standards require that chimneys are structurally sound, durable, smoke tight and capable of conveying flue gases to the outside competely and safely.

### National Fire Protection Association (NFPA)

"If the flue liner in a chimney has softened, cracked or otherwise deteriorated so that it no longer has the ability to contain the products of combustion (i.e., heat, moisture, creosote, and flue gases), it shall be removed and replaced, repaired or relined. . ." NFPA 211- Standard for Chimneys, Fireplaces, Vents, and Solid Fuel-Burning Appliances (2006).

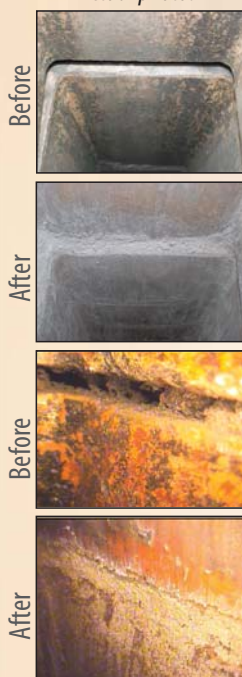
# HeatShield® Restores The Integrity Of Your Chimney

HeatShield® is a specially formulated "Cerfractory®" sealant material that restores the integrity of your chimney's flue to vent hazardous flue gases from your home. It eliminates the dangers in your chimney caused by gaps, cracks and spalling for years to come. By using either the Joint Repair System or Resurfacing System, depending on the defects found, your chimney will be restored to its original peak level of safety and efficiency.

## Joint Repair

For chimneys that only require repair of gaps caused by defective mortar joints, the Joint Repair System is used with a video camera attached to verify repairs.

Actual photos



Missing mortar between flue tiles

Video camera

Gaps sealed with HeatShield®

## Resurfacing

For chimneys with cracked or spalled flues, that are otherwise sound, the Resurfacing System is used to apply a coating over the entire flue. Cameras are used to verify repairs.

Actual photos



Spalling flue tile

Cracked flue tile

Gaps, cracks & spalling repaired with HeatShield®

## HeatShield® Takes The Heat— So You Don't Have To

Developed in Europe over 20 years ago, HeatShield's Cerfractory® technology is a hybrid (ceramic/refractory) coating and has been proven to withstand moisture, corrosive flue gases and temperatures in excess of 2900°F. HeatShield® has been independently tested. It exceeds all ASTM (American Society for Testing and Materials) and UL (Underwriters Laboratories) standards for chimney repair and resurfacing products.



Actual disk of HeatShield® Cerfractory® heated with torch

HeatShield® is listed to UL Subject 2425 as an approved "all fuel" chimney repair and resurfacing system. To view and verify HeatShield's Listing and Product Certification from Intertek's Wernock Hersey Test Lab, visit [CeCureChimney.com](http://CeCureChimney.com) for a direct link.

## Your Chimney Expertly Repaired

Independent HeatShield® installers are carefully selected based on their industry certifications and experience. Armed with factory training and specially designed tools, your HeatShield® professional can expertly repair your chimney. Special video cameras are used to verify completed repairs.

## Economical And Environmentally Friendly

HeatShield® is an "Eco" friendly product manufactured from recycled and natural occurring materials. HeatShield® offers you and your chimney professional a less costly alternative to rebuilding your chimney or installing a new liner.

## 20-Year Limited Warranty

With HeatShield® you will have the assurance of knowing your chimney is made safer and more efficient. Whether your chimney requires repair of defective mortar joints or complete resurfacing, HeatShield® is covered by a 20 year material warranty. Ask your HeatShield® professional for details.



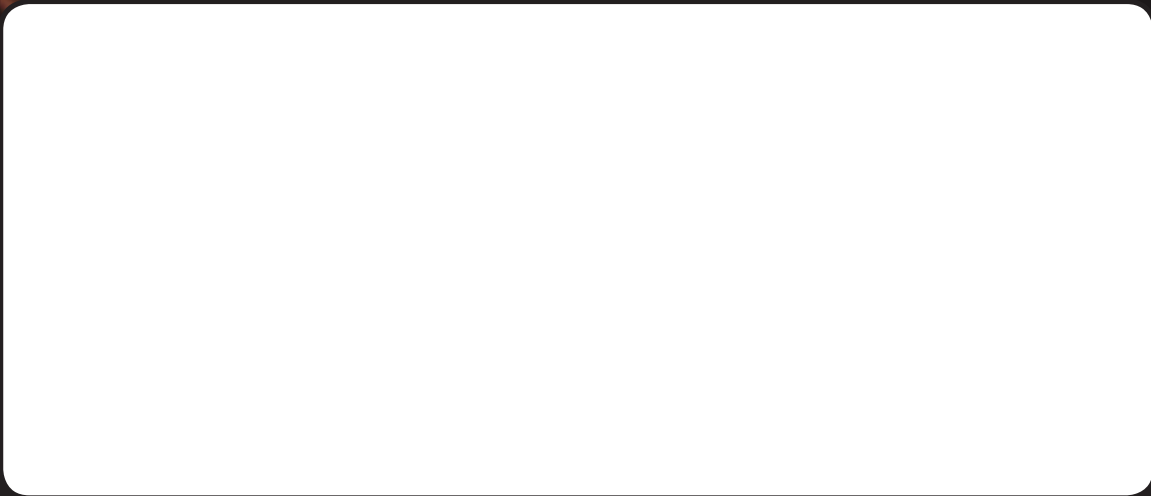
**CeCURE<sup>®</sup>**  
CHIMNEY SYSTEMS LLC

*c/o SaverSystems*

800 South 7<sup>th</sup> Street • Richmond IN 47374

[www.cecurechimney.com](http://www.cecurechimney.com)

**Your Factory Trained HeatShield<sup>®</sup> Professional:**



Copyright 2009 SaverSystems<sup>®</sup>